

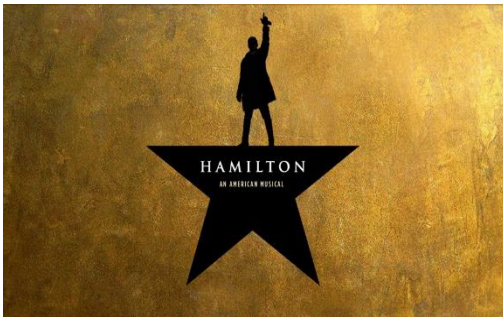


COMEDY NIGHT!

AT **CAROLINES** AN EVENT BENEFITING RESEARCH FOR POLYCYSTIC KIDNEY DISEASE



SILENT AUCTION ITEMS



4 VIP Premium Orchestra Tickets to HAMILTON

Starting bid **\$2000 (\$500 per ticket)**
Valued at **\$4000 (\$1000 per ticket)**
Donated by **Anna Mullen and Anna Brenner**

Four (4) VIP tickets to see the play of the century from the front of the orchestra in premium House Seats! Valid January 2019 or later.



2 VIP Tickets to “The Daily Show with Trevor Noah”

Starting bid **N/A**
Valued at **Priceless**
Donated by **Comedy Central**

Two (2) VIP tickets to a taping of The Daily Show with Trevor Noah in New York City.



5 Classes at Soul Cycle

Starting bid **\$150**
Valued at **\$200**
Donated by **Amy Epstein**

Five (5) 45-minute indoor cycling classes featuring high-intensity cardio, muscle-sculpting strength training, and rhythm-based choreography.



PKD FOUNDATION
Polycystic Kidney Disease



Backstage CNN Tour

Starting bid **N/A**
 Valued at **Priceless in 2018**
 Donated by **Richard Roth**

Backstage Tour of CNN in New York, by Richard Roth, Senior UN Correspondent for CNN.



Golf at Westchester Country Club

Starting bid **\$150**
 Valued at **\$500**
 Donated by **John Delehanty, Delehanty Resolutions, LLC**

Lunch and golf outing for 3 at the Westchester Country Club, Harrison, NY, guest of John Delehanty.



Michael Kors black leather men's jacket (Medium)

Starting bid **\$175**
 Valued at **\$400**
 Donated by **Andrea Kringstein**

A meticulously crafted men's jacket by Michael Kors is 100% supple leather. It has minimal hardware to make you look amazing.



Michael Kors leather women's jacket (Medium)

Starting bid **\$175**
 Valued at **\$400**
 Donated by **Andrea Kringstein**

This beautiful cognac brown 100% leather jacket by Michael Kors has a cool, edgy look for a stunning finish to any outfit.





Limited Edition JIMMY CHOO Artie Bag

Starting bid **\$1000**

Valued at **\$1795**

Donated by **Jaime Wynn and Jimmy Choo, N.A.**

Limited Edition (1 of 5) JIMMY CHOO Artie Shoulder Bag. Luxurious suede saddle-shaped shoulder bag with python trim, studded, braided top handle and removable shoulder strap; top-zip closure; goldstone hardware; inside slip pocket; fully lined.



Nike

Nike Gift Card

Starting bid **\$50**

Valued at **\$100**

Donated by **Amy Epstein**

"Just Do It!" with this \$100 Nike gift card.



Dinner (for 2) at Morton's Steakhouse

Starting bid **\$175**

Valued at **\$250**

Donated by **Amy Epstein**

Enjoy a dinner (probably for 2) at any of the 78 Morton's Steakhouse restaurants around the country with this \$250 gift card!



NHL Central Division Jersey signed by the 2017 All-Star Team (Men's Large)

Starting bid **\$100**

Valued at **\$500**

Donated by **NHL**



PKD FOUNDATION
Polycystic Kidney Disease



Private Kayak Tour for 4 on the Hudson River

Starting bid **\$250**
Valued at **\$500**
Donated by **Sarah Giller**

Private 2-hour kayaking tour for four on the Hudson River and led by the Yonkers Paddling and Rowing Club.



Exclusive Gift Tray from The Chocolate Room

Starting bid **\$20**
Valued at **\$46**
Donated by **Jon Payson, The Chocolate Room**

The Chocolate Room's Exclusive Gift Tray featuring an assortment of handmade chocolate products.



Luxurious Spa Day at SoJo Spa Club

Starting bid **\$100**
Valued at **\$360**
Donated by **SoJo Spa Club and Cheely Ann Sy**

SoJo Spa Club is a unique day spa in Edgewater, NJ based on Korean culture. Spa basket contains two (2) day-passes; \$100 gift card for food; exfoliating spa matt; 2 sleep masks; clipper set; bamboo hair brush; phone case; essential oils, shampoo & conditioner; and more, plus complimentary shuttle bus from midtown Manhattan.

Delta



\$250 Delta Gift Card

Starting bid **\$175**
Valued at **\$250**
Donated by **Amy Epstein**

"Keep climbing" with this Delta Gift Card valid for any Delta air transportation purchase.



PKD FOUNDATION
Polycystic Kidney Disease



Coach Leather Shoulder Bag

Starting bid **\$125**

Valued at **\$275**

Donated by **Rochelle Schumer**

A stunning leather Coach shoulder bag in a rich burgundy color is 10" wide and 7" high. It has an outside pocket, inside pocket and adjustable shoulder strap.



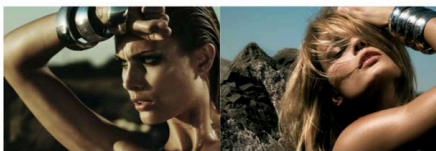
2 VIP Tickets to "Full Frontal with Samantha Bee"

Starting bid **N/A**

Valued at **Priceless**

Donated by **Turner Broadcasting System**

2 VIP Tickets to a taping of "Full Frontal with Samantha Bee" in New York City. Show tapes most Wednesdays in Manhattan and winner may choose a convenient date. Guests must be over 18 years of age.



Color—Cut—Style by Celebrity Hairstylist

Starting bid **\$300**

Valued at **\$600**

Donated by **Meg Munits**

Reinvent yourself with a new look created just for you by celebrity hairstylist, Antonio Zaazoua, the personal hairstylist to a leading recording artist, numerous actors, VIPs and New York Fashion Week runway models.



PKD FOUNDATION
Polycystic Kidney Disease