

The Polycystic Kidney Disease Foundation has awarded  
The University of Kansas Health System and the University of Kansas Medical Center as a

# Center of Excellence



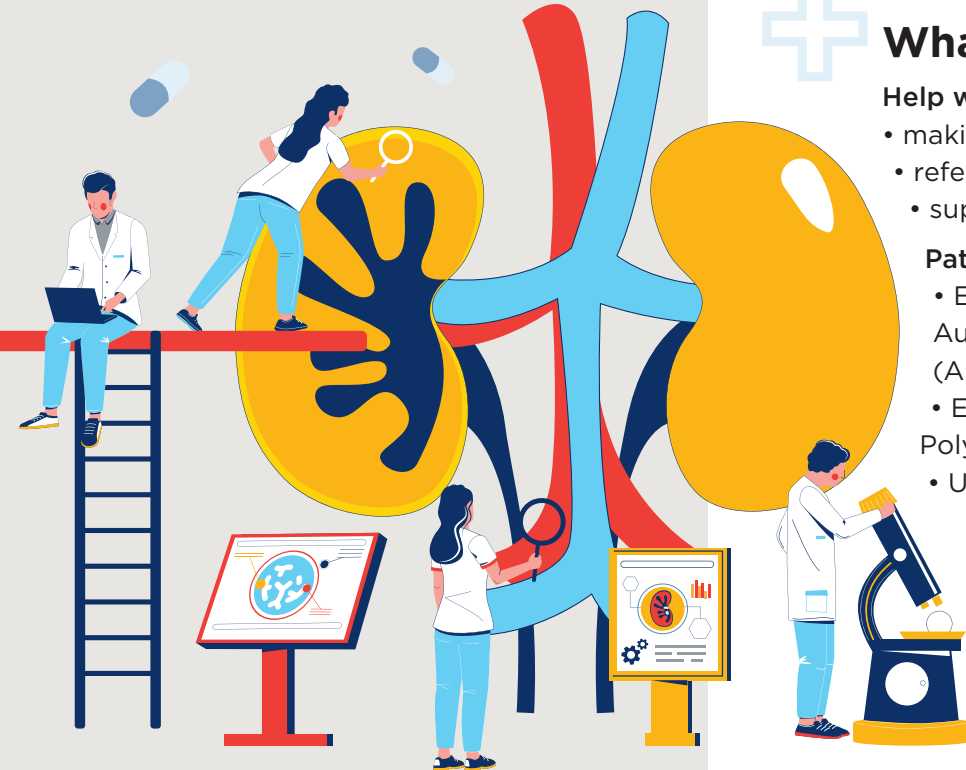
## What does this mean for you?

### Help with:

- making appointments
- referrals to other services
- support with sticking to your treatment plan

### Patient-focused, comprehensive care

- Ensuring better care for all  
Autosomal Dominant Polycystic Kidney Disease  
(ADPKD) patients
- Educating and empowering the  
Polycystic Kidney Disease (PKD) community
- Understanding PKD through research



## Learn More



The Polycystic Kidney  
Disease Foundation



The University of Kansas  
Health System Polycystic  
Kidney Disease Clinic



The Jared Grantham  
Kidney Institute



PKD Clinical Trials at  
KU Medical Center



## Get Involved

### Join the Patient Advisory Panel

*What are your thoughts and suggestions about the care you receive at KU?*

### Join a Patient Focus Group

*How is living with PKD affecting you and your family?*

### Participate in Clinical Trials and Research

*Learn about current PKD clinical trials and research at KU Medical Center*

### Sign up for the ADPKD Registry

*Available through the PKD Foundation*

### Attend a Workshop

*Topics include managing blood pressure, meal and snack suggestions, tour the KU Center for Transplant, etc.*



### KU Polycystic Kidney Disease Navigation Services

913-588-3985 | [PKDinfo@kumc.edu](mailto:PKDinfo@kumc.edu)



THE UNIVERSITY OF  
KANSAS HEALTH SYSTEM

**KU** MEDICAL  
CENTER

The University of Kansas