

The PKD Foundation
is the only organization
in the U.S. solely
dedicated to finding
treatments and a cure
for PKD to improve the
lives of those it affects.



PKD FOUNDATION

Polycystic Kidney Disease

pkdcure.org

**The PKD Foundation
is the only organization
in the U.S. solely
dedicated to finding
treatments and a cure
for PKD to improve lives
of those it affects .**



PKD FOUNDATION
Polycystic Kidney Disease

1 in 20,000
children are affected
with ARPKD



Autosomal recessive polycystic kidney disease (ARPKD) is a relatively rare form of PKD.



PKD FOUNDATION
Polycystic Kidney Disease

pkdcure.org

1 in 20,000
children are affected
with ARPKD



Autosomal recessive polycystic kidney disease (ARPKD) is a relatively rare form of PKD.



PKD FOUNDATION
Polycystic Kidney Disease

70%

of ARPKD
children survive
the newborn period

1/3

will need dialysis
or a transplant
by age 10



PKD FOUNDATION

Polycystic Kidney Disease

pkdcure.org

70%

of ARPKD
children survive
the newborn period

1/3

will need dialysis
or a transplant
by age 10



PKD FOUNDATION
Polycystic Kidney Disease

PKD has **no**
cure, but the
PKD Foundation
is working to
change that.



PKD FOUNDATION
Polycystic Kidney Disease

A faint, light blue graphic of a microscope is positioned in the background, centered behind the main text. The microscope is oriented diagonally, pointing towards the top right.

PKD has **no
cure**, but the
PKD Foundation
is **working to
change that.**



PKD FOUNDATION
Polycystic Kidney Disease

10%

of PKD patients
have no family
history of polycystic
kidney disease.



PKD FOUNDATION
Polycystic Kidney Disease

pkdcure.org

10%

have no family
history of polycystic
kidney disease.



PKD FOUNDATION
Polycystic Kidney Disease

The average size
of a normal kidney
is a human fist.
Polycystic kidneys
can get as **large**
as a football,
and weigh up to
30 pounds each.



PKD FOUNDATION

Polycystic Kidney Disease

pkdcure.org

The average size
of a normal kidney
is a human fist.
Polycystic kidneys
can get as **large**
as a football,
and weigh up to
30 pounds each.

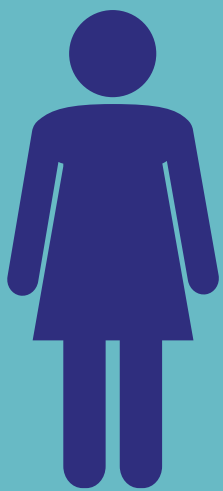
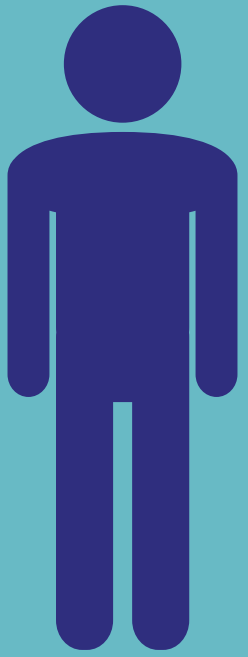


PKD FOUNDATION
Polycystic Kidney Disease

Parents with
ADPKD have a

50%

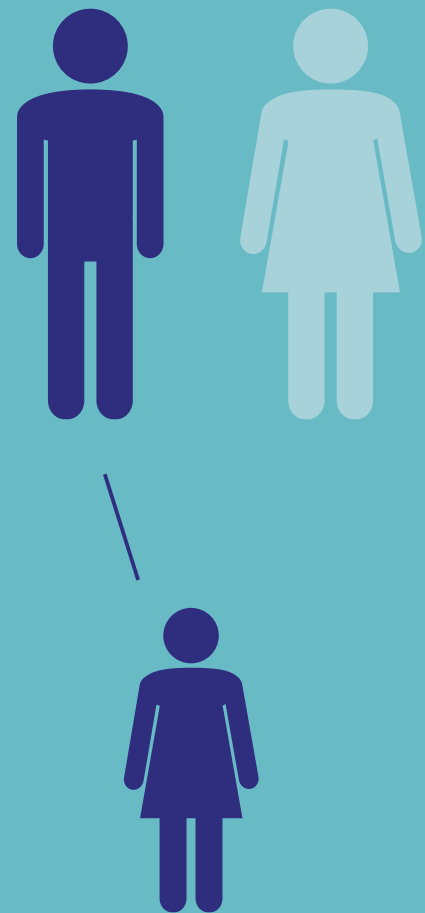
chance of passing
ADPKD to each
of their children.



PKD FOUNDATION

Polycystic Kidney Disease

pkdcure.org



Parents have a

50%

chance of passing
PKD to each
of their children.



PKD FOUNDATION
Polycystic Kidney Disease

PKD causes
fluid-filled cysts
to develop in both
kidneys and
leads to
kidney failure.



PKD FOUNDATION

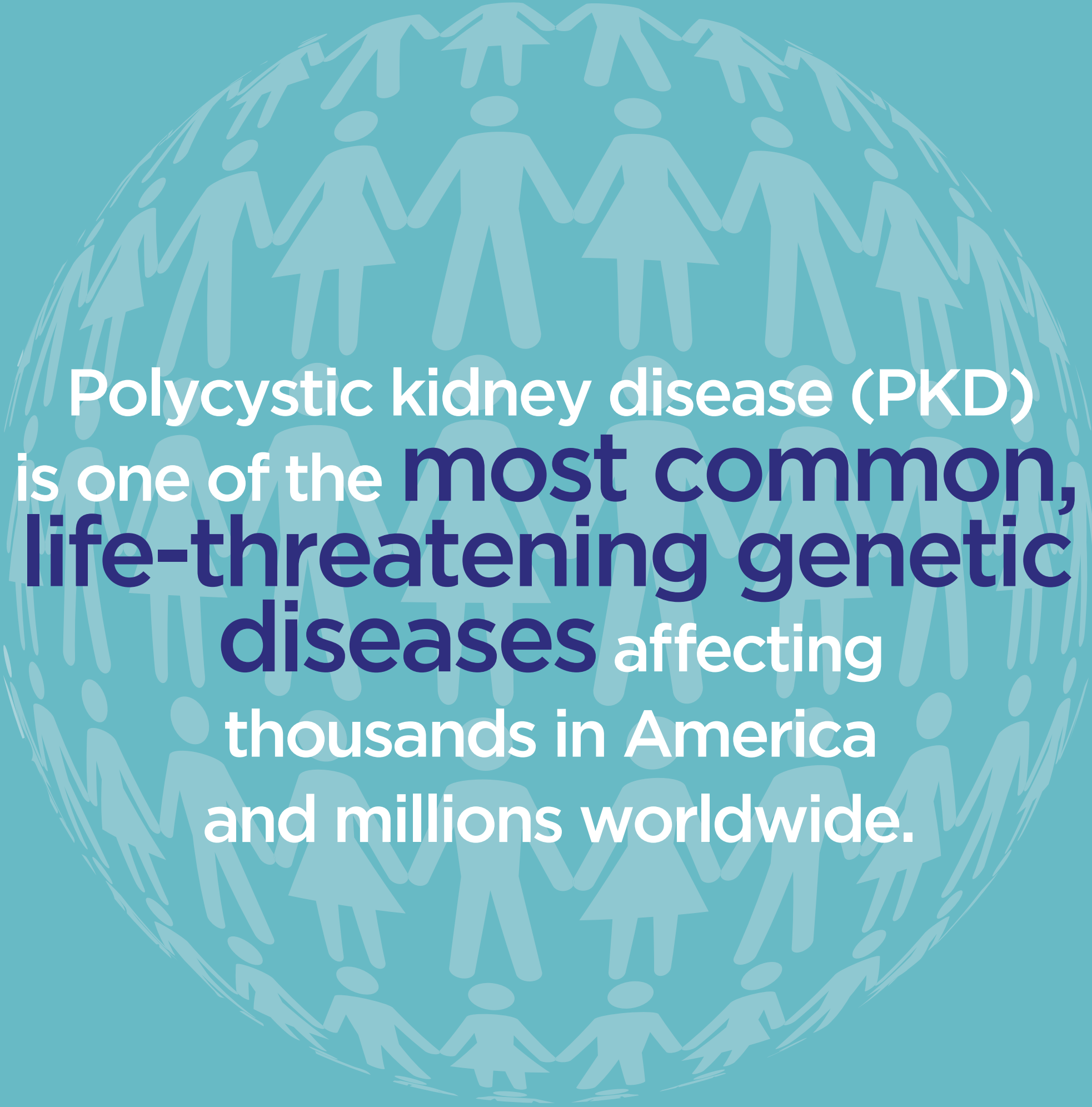
Polycystic Kidney Disease

pkdcure.org

PKD causes
fluid-filled cysts
to develop in both
kidneys and
leads to
kidney failure.



PKD FOUNDATION
Polycystic Kidney Disease



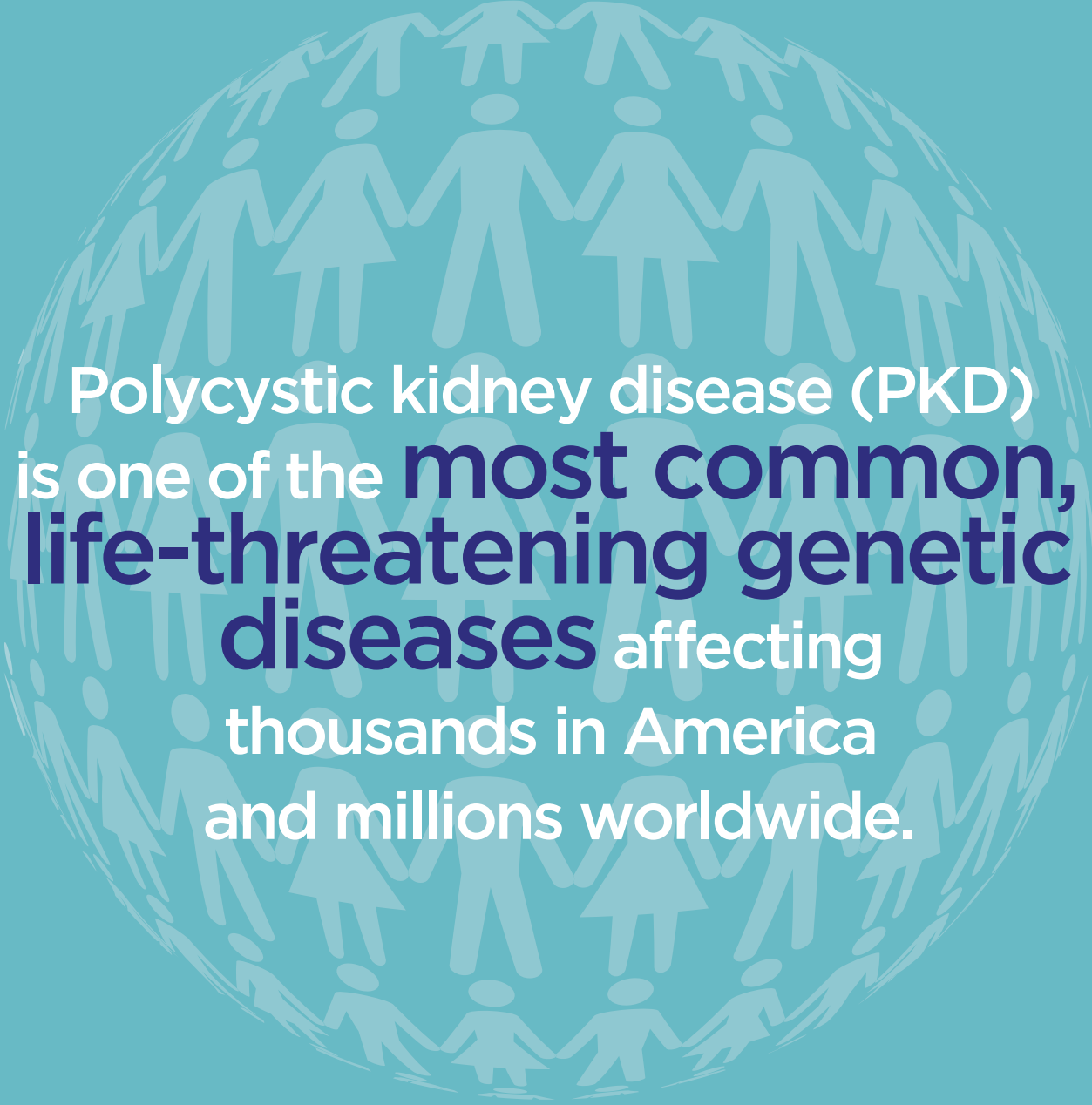
Polycystic kidney disease (PKD) is one of the **most common, life-threatening genetic diseases** affecting thousands in America and millions worldwide.



PKD FOUNDATION

Polycystic Kidney Disease

pkdcure.org



Polycystic kidney disease (PKD)
is one of the **most common,
life-threatening genetic
diseases** affecting
thousands in America
and millions worldwide.



PKD FOUNDATION
Polycystic Kidney Disease

**The Walk for PKD
takes place
in more than**

50

**cities across the
nation each year
with more than**

11,000

walkers.



PKD FOUNDATION
Polycystic Kidney Disease

pkdcure.org

Walk for PKD takes
place in more than

50

cities across the
nation each year
with more than

11,000

walkers.



PKD FOUNDATION
Polycystic Kidney Disease

**The Walk for PKD
has raised nearly
\$24 million
since 2000.**



PKD FOUNDATION
Polycystic Kidney Disease

pkdcure.org

Walk for PKD
has raised nearly
\$24 Million
since 2000.



PKD FOUNDATION
Polycystic Kidney Disease

**The Walk for PKD
is the Foundation's
signature event to
raise funds
and awareness.**



PKD FOUNDATION

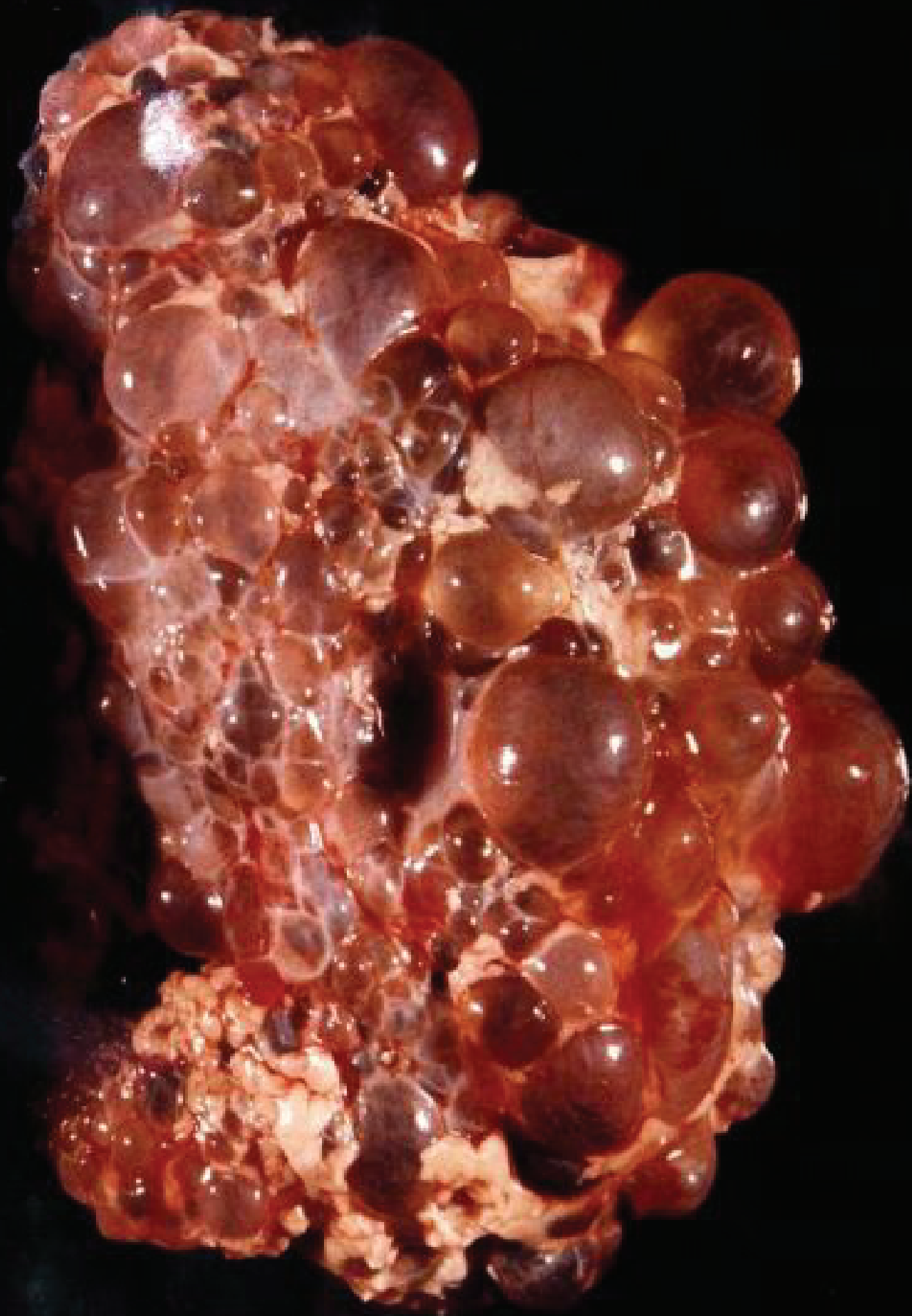
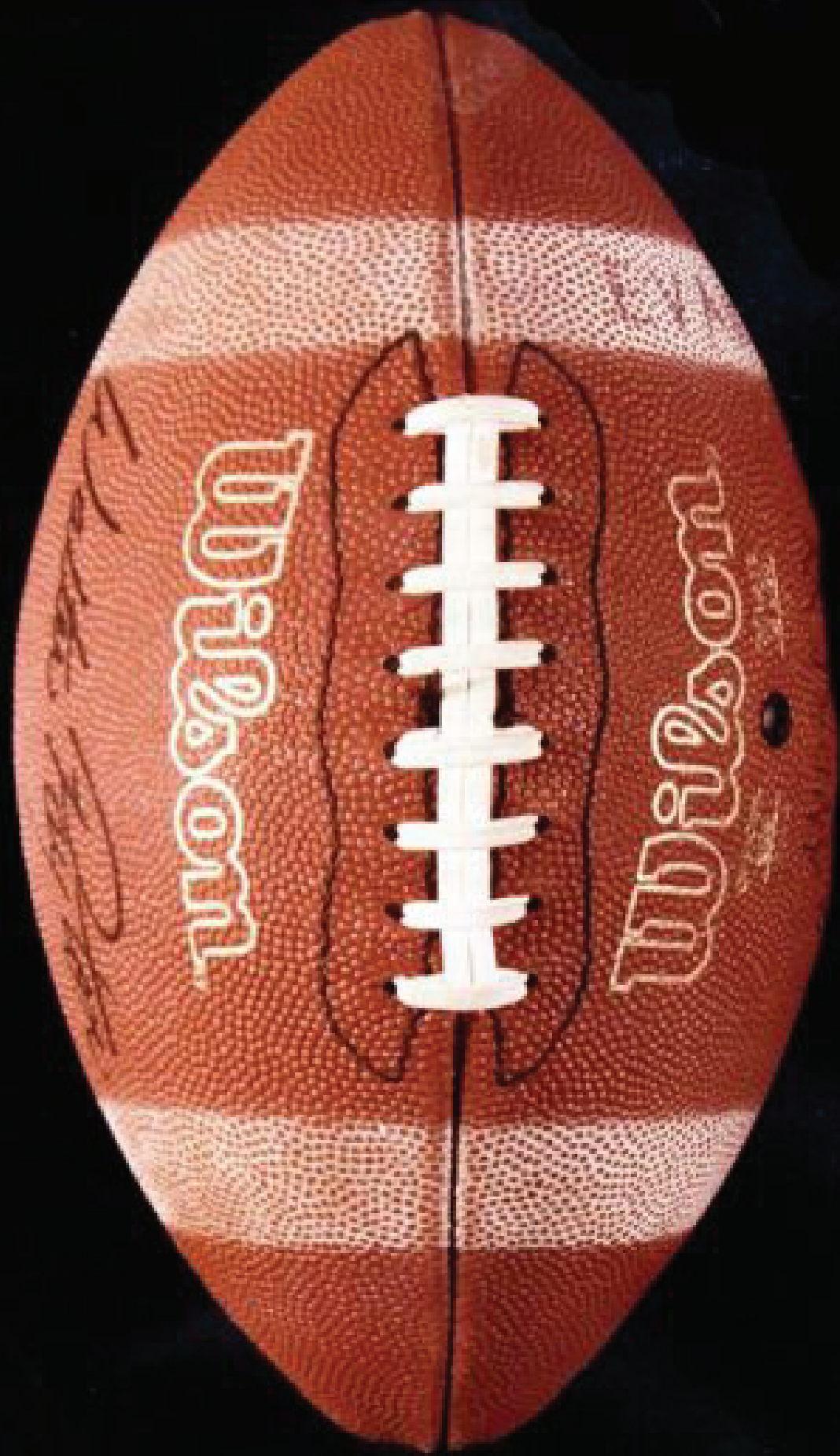
Polycystic Kidney Disease

pkdcure.org

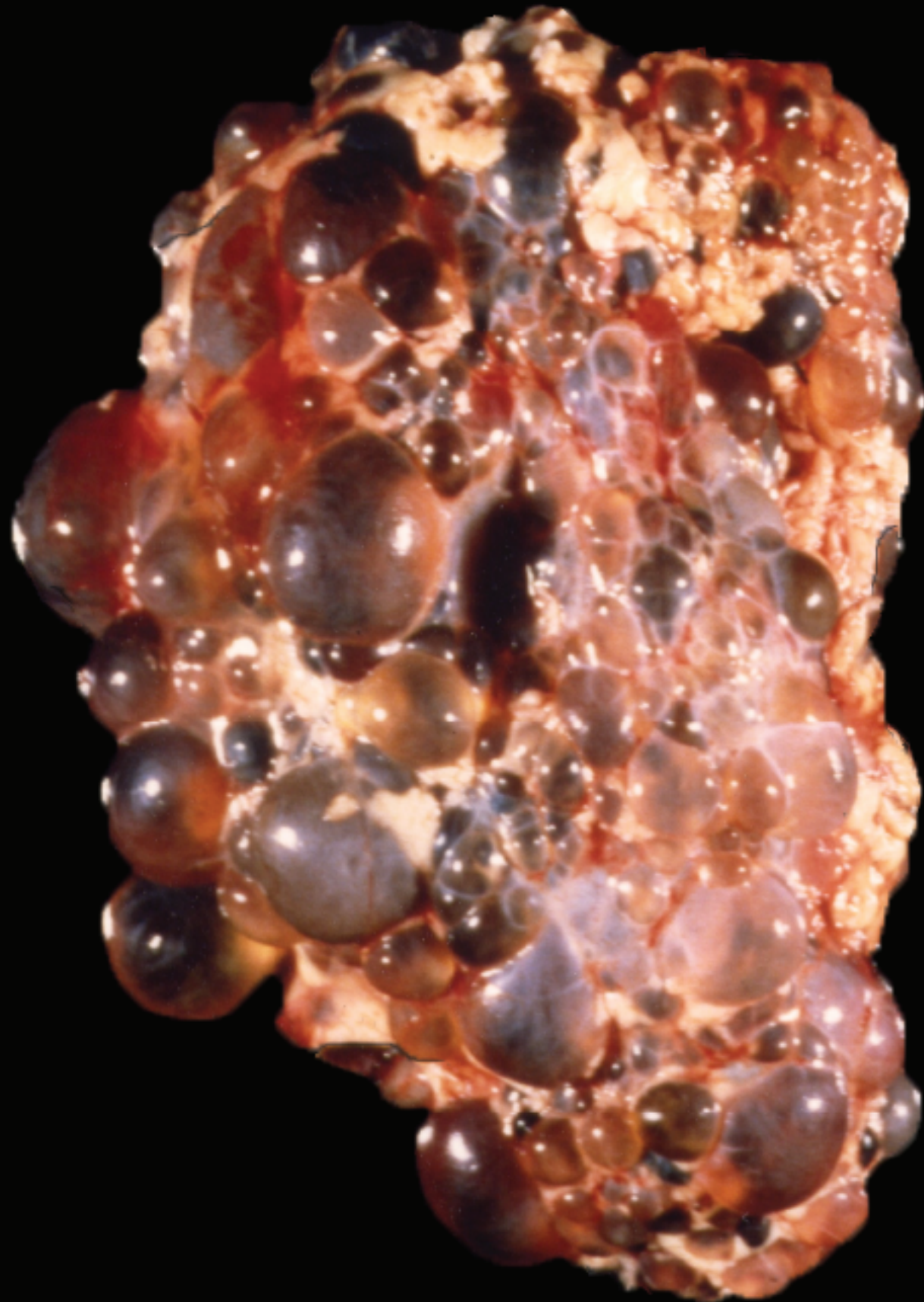
**The Walk for PKD
is the Foundation's
signature event to
raise funds
and awareness.**



PKD FOUNDATION
Polycystic Kidney Disease



PKD Kidney



Normal Kidney

